

MONTHLY MEMBERSHIP PROGRESS REPORT

District 317 B

Results as of: 7/31/2024

GMT:

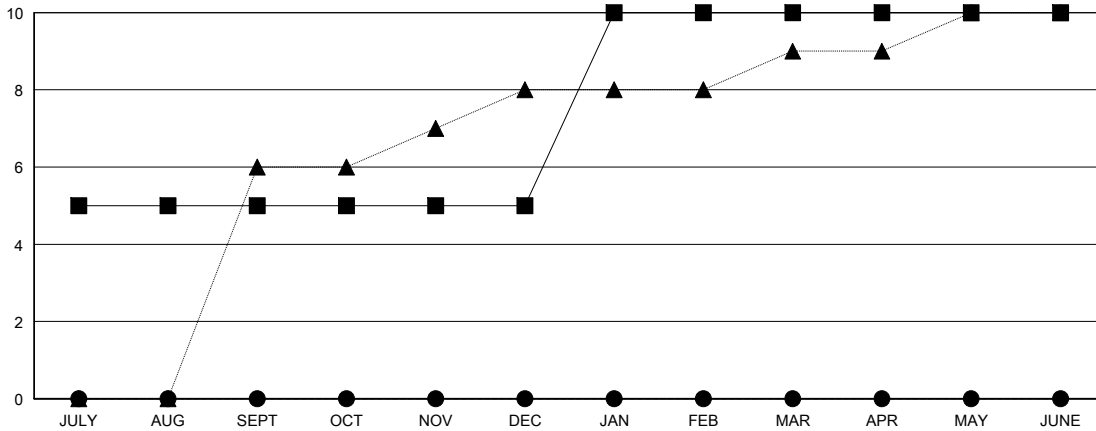
LOCATION INDIA

GMT CA

Clubs			
RESULTS FOR 2024-2025			
QUARTER	NEW CLUB GOAL	NEW CLUBS	DROPPED CLUBS
JULY/AUG/SEPT	5	0	0
OCT/NOV/DEC	0	0	0
JAN/FEB/MAR	5	0	0
APR/MAY/JUNE	0	0	0

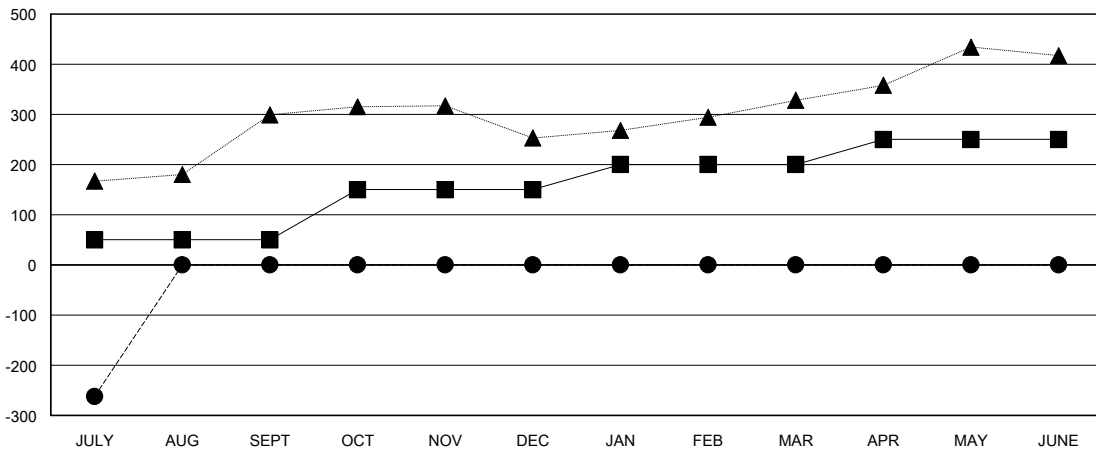
Members			
RESULTS FOR 2024-2025			
QUARTER	MEMBER GROWTH NET GOAL	MEMBER GROWTH ACTUAL	DROPPED MEMBERS ACTUAL (including transfers)
JULY/AUG/SEPT	50	97	353
OCT/NOV/DEC	100	0	0
JAN/FEB/MAR	50	0	0
APR/MAY/JUNE	50	0	0

GOALS AND ACTUAL NEW CLUBS CUMULATIVE



- - CURRENT YEAR GOALS FOR NEW CLUBS
- - CURRENT YEAR ACTUAL NEW CLUBS
- ▲ - LAST YEAR ACTUAL NEW CLUBS

GOALS AND ACTUAL MEMBERS CUMULATIVE



- - MEMBER GROWTH NET GOAL
- - MEMBER GROWTH ACTUAL
- ▲ - LAST YEAR MEMBERSHIP ACTUAL

DROPPED CLUBS: 0	
DROPPED MEMBERS	
DECEASED	4
CLUB CANCELLED	0
OTHER	348
TOTAL	352

14 CLUBS OF 112 ADDED 1 OR MORE NEW MEMBERS

GENDER DISTRIBUTION	
MALE	2,917 (77.87%)
FEMALE	829 (22.13%)

[CLICK HERE FOR CUMULATIVE MEMBERSHIP DATA](#)

TOTAL FAMILY UNIT MEMBERS	1,329
FAMILY MEMBERS PAYING HALF DUES	729